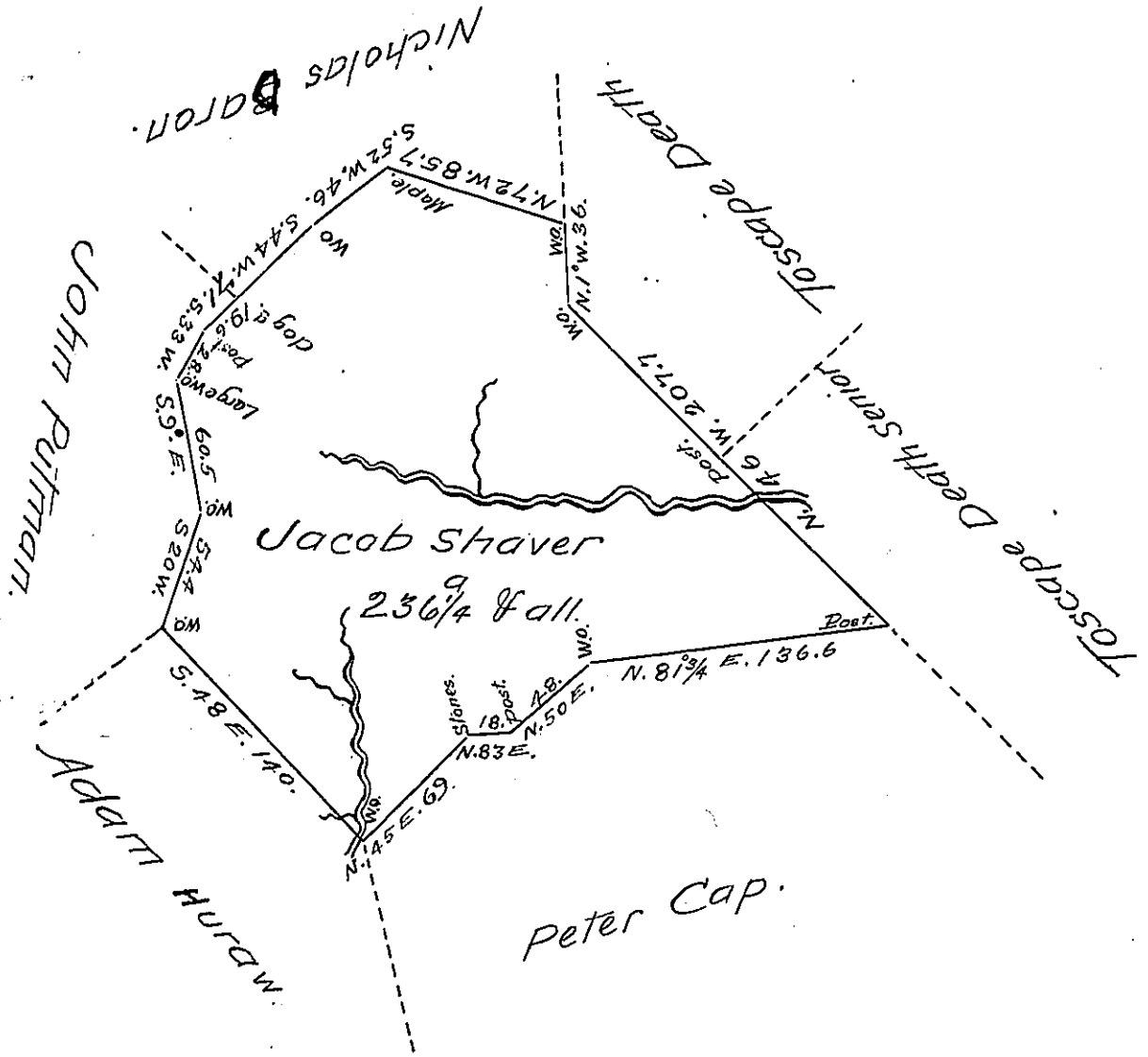


Now Somerset Township
Somerset County



Situated on a branch of Coxes Creek and adjoining
lands of John Pulman and others in Milford Township
Bedford County and Surveyed the 20th day of April 1786
In Pursuance of a Warrant dated the 28th Day of Jan-
uary 1786

Alexander McClean Deputy

To Daniel Brodhead Esquire
Surveyor General

IN TESTIMONY that the above is a copy of the original remaining on file in
the Department of Internal Affairs of Pennsylvania, made
conformably to an Act of Assembly approved the 16th day of
February, 1833, I have hereunto set my Hand and caused
the Seal of said Department to be affixed at Harrisburg,
this twentieth day of December 1906.

Isaac R. Brown
Secretary of Internal Affairs.